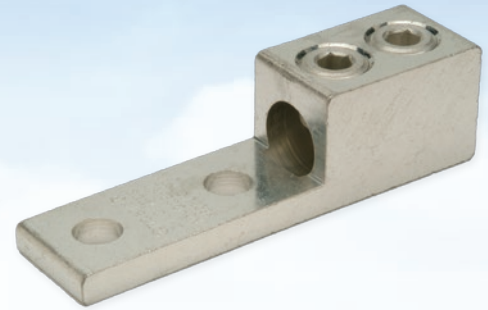


# Aluminum Dual Rated Lugs - Two Hole Tongue with Tandem Set Screws

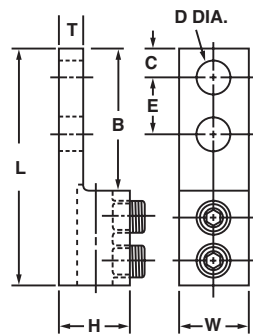
## Type LLA2

For use with one copper or aluminum conductor

- Manufactured from high strength aluminum alloy extrusion
- Electro-tin plated to ensure minimum contact resistance and protection against corrosion when used with copper wire
- Two hole mounting pad allows for maximum surface contact in heavy duty applications
- Tandem set screws provide superior mechanical performance
- Connectors are rated for 600 V, 90°C applications
- The use of oxide inhibitor is recommended for all aluminum terminations



486A-486B  
LISTED  
AL9CU



CATALOG NUMBER	CONDUCTOR RANGE	APPROXIMATE DIMENSIONS (IN.)									MTG. BOLT SIZE	HEX SIZE
		L	W	H	T	B	C	D (DIA.)	E			
LLA2-500-S1	4/0 Str. - 500 kcmil	5.50	1.38	1.50	.38	3.25	.63	.56	1.75	1/2	3/8	
LLA2-750-S1	300 - 800 kcmil	6.19	1.45	1.88	.56	3.44	.63	.56	1.75		1/2	